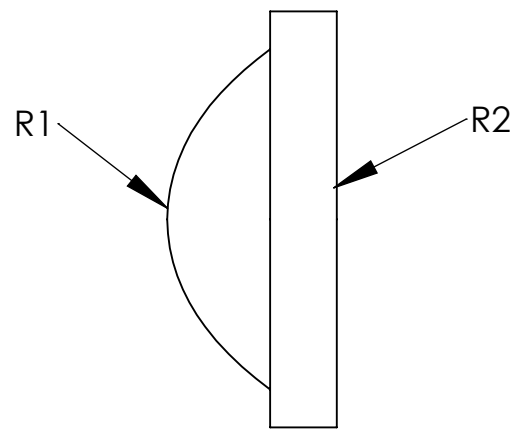
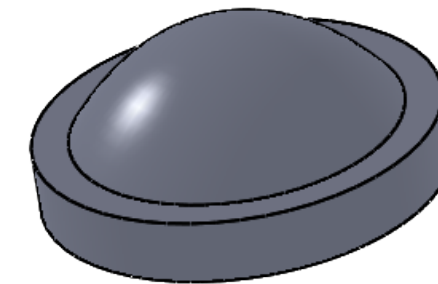
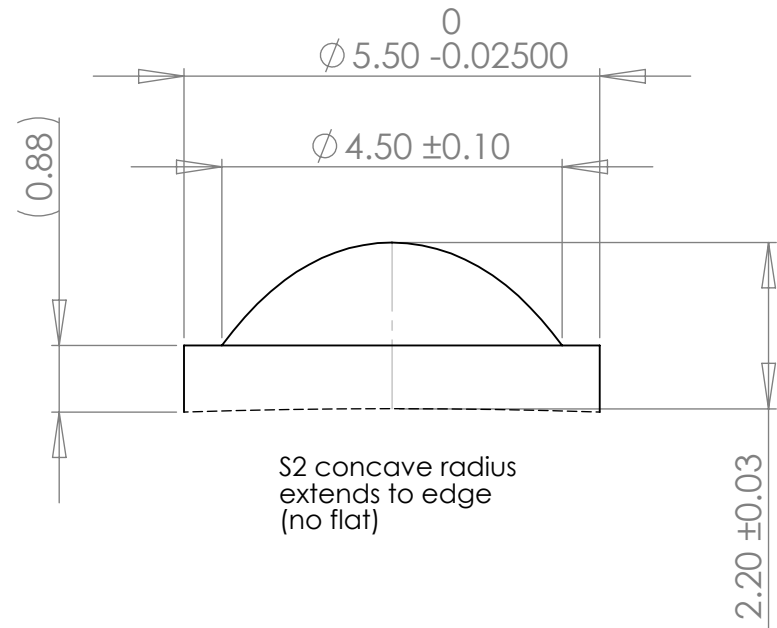


	Base Radius (mm)	CX	CC	Irregularity (fringes)	Clear Aperture (mm)	Surface Quality (typical)	Centration (arcmin)
R1	2.1303	X		1.0	3.6	40/20	3
R2	84.2348		x	1.0	3.6	40/20	

REVISIONS			
REV.	DESCRIPTION	DATE	BY
H	Update	8/21/2019	DF



Notes:

Material: S-LAM60M

AR Coating: Reflectivity <0.5% from 405nm to 650nm or 620-1080nm ("B" coat), per surface,

Bevel Edges: 0.1 - 0.3mm max face width at 45°

All dimensions in mm unless noted

1208 Sigma CT.
Rockwall, TX 75087
Ph: (972) 722-1064
Web: www.archeroptx.com

Archer Optx
Optical Precision. Optimal Outcome.

PROPRIETARY AND CONFIDENTIAL
THE INFORMATION CONTAINED IN THIS DRAWING IS THE SOLE PROPERTY OF ARCHER OPTX, INC. ANY REPRODUCTION IN PART OR AS A WHOLE WITHOUT THE WRITTEN PERMISSION OF ARCHER OPTX, INC. IS PROHIBITED.

		UNLESS OTHERWISE SPECIFIED:	NAME	DATE	TITLE: P5528
		DIMENSIONS ARE IN MM	DRAWN		
		TOLERANCES:	CHECKED		
		FRACTIONAL ±	ENG APPR.		
		ANGULAR: MACH ± BEND ±	MFG APPR.		
		TWO PLACE DECIMAL ±	Q.A.		SIZE DWG. NO. REV B H
		THREE PLACE DECIMAL ±	COMMENTS:		
		INTERPRET GEOMETRIC TOLERANCING PER:			SCALE: 10:1 WEIGHT: SHEET 1 OF 1
		MATERIAL			
NEXT ASSY	USED ON	FINISH			
APPLICATION		DO NOT SCALE DRAWING			