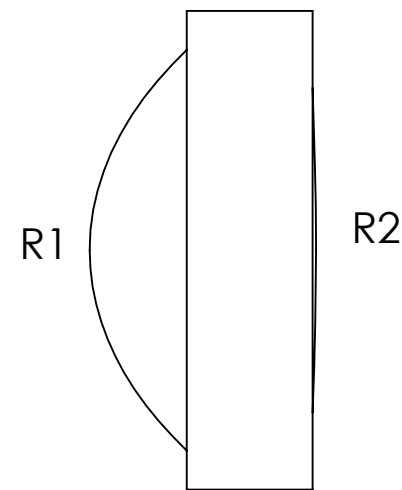
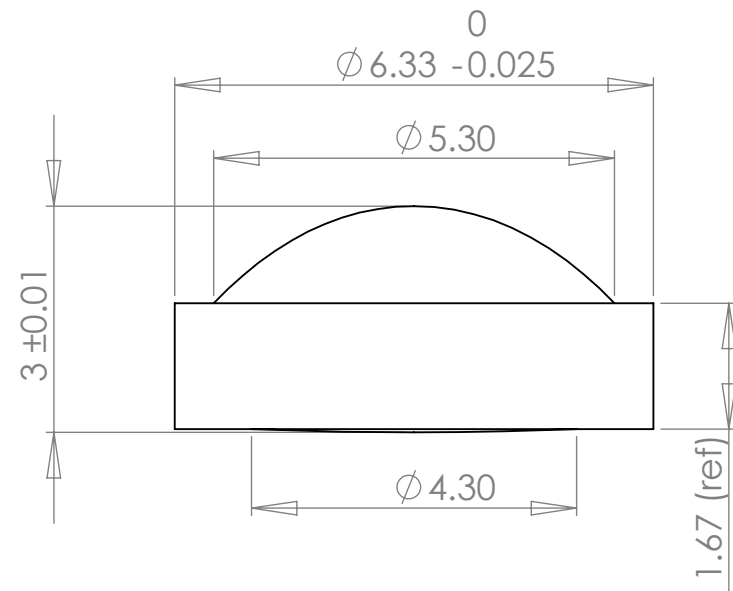
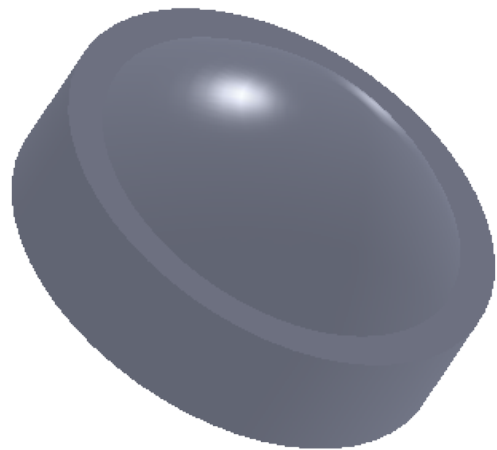


	Base Radius (mm)	CX	CC	Irregularity (fringes)	Clear Aperture (mm)	Surface Quality (typical)	Centration (arcmin)
R1	2.97281	X		0.5	4.8	40/20	3
R2	42.23052	X		0.5	4.0	40/20	

REVISIONS			
REV.	DESCRIPTION	DATE	APPROVED
J	Updates	8/21/2019	DF



Notes:

- 1) Material: S-LAL13M
- 2) AR Coating: <0.5% reflectivity from 380-580nm, per surface
- 3) Edge Chamfer: 0.1-0.3 mm
- 4) All dimensions in mm unless noted.

1208 Sigma Ct
 Rockwall, TX 75087
 Ph: (972) 972-1064
 Web: www.archeroptx.com



PROPRIETARY AND CONFIDENTIAL
 THE INFORMATION CONTAINED IN THIS DRAWING IS THE SOLE PROPERTY OF ARCHER OPTX, INC. ANY REPRODUCTION IN PART OR AS A WHOLE WITHOUT THE WRITTEN PERMISSION OF ARCHER OPTX, INC IS PROHIBITED.

UNLESS OTHERWISE SPECIFIED:		NAME	DATE	TITLE: L671-ZX
DIMENSIONS ARE IN MM TOLERANCES: FRACTIONAL ± ANGULAR: MACH ± BEND ± TWO PLACE DECIMAL ± THREE PLACE DECIMAL ±		DRAWN		
INTERPRET GEOMETRIC TOLERANCING PER:		CHECKED		
MATERIAL		ENG APPR.		
FINISH		MFG APPR.		
NEXT ASSY	USED ON	Q.A.		SIZE B DWG. NO.
APPLICATION		COMMENTS:		REV J
DO NOT SCALE DRAWING				SCALE: 10:1 WEIGHT: SHEET 1 OF 1