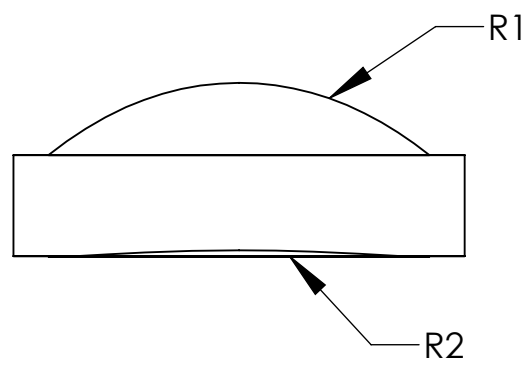
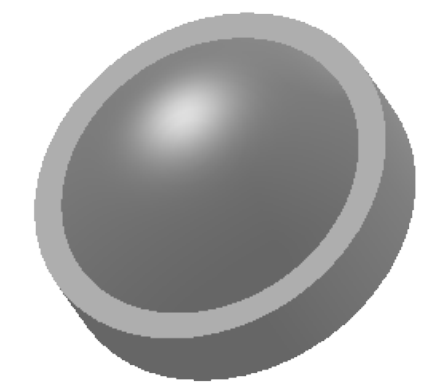
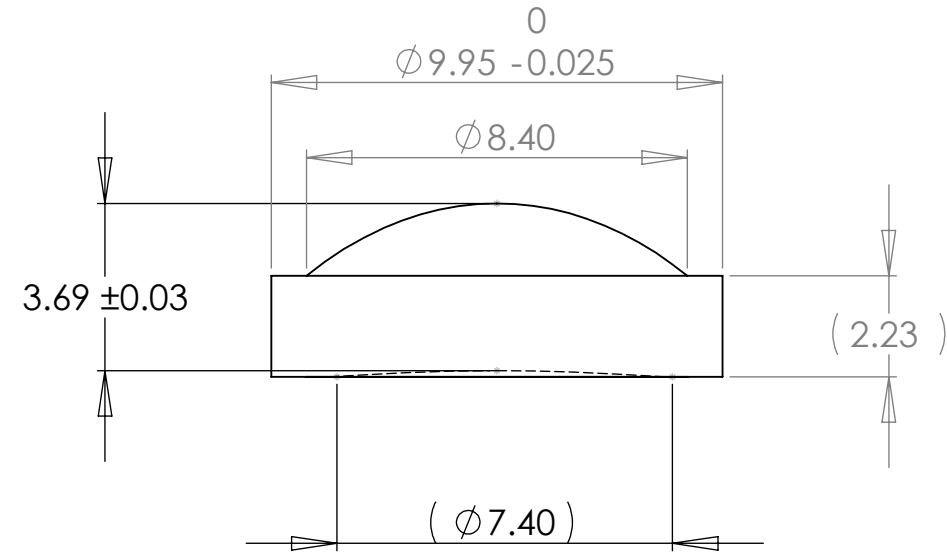


	Base Radius (mm)	CX	CC	Irregularity (fringes)	Clear Aperture (mm)	Surface Quality (typical)	Centration (arcmin)
R1	5.900	X		1.0	8.0	40/20	3
R2	45.23		X	1.0	7.0	40/20	

REVISIONS			
REV.	DESCRIPTION	DATE	APPROVED
A	Initial Release	12/29/2008	DT
B	Revised CT	1/15/2009	DT
C	Changed Address	12/16/2014	DF
D	General Drawing Updates	8/17/2015	DF
E	Update	8/20/2019	DF



Notes:

Material: S-LAH60M

Edge Chamfer: 0.1-0.3mm

AR Coating: <0.5% Reflectivity as follows:400-650nm ("A" coat) or 620-1080nm ("B" coat), per surface.

Break sharp edges.

1208 Sigma Ct
 Rockwall, TX 75087
 Ph: (972) 722-1064
 Web: www.archeroptx.com



PROPRIETARY AND CONFIDENTIAL
 THE INFORMATION CONTAINED IN THIS DRAWING IS THE SOLE PROPERTY OF ARCHER OPTX, INC. ANY REPRODUCTION IN PART OR AS A WHOLE WITHOUT THE WRITTEN PERMISSION OF ARCHER OPTX, INC IS PROHIBITED.

UNLESS OTHERWISE SPECIFIED:		NAME	DATE	TITLE: L240
DIMENSIONS ARE IN MM		DRAWN		
TOLERANCES:		CHECKED		
FRACTIONAL ±		ENG APPR.		
ANGULAR: MACH ± BEND ±		MFG APPR.		
TWO PLACE DECIMAL ±		Q.A.		SIZE DWG. NO. REV B E
THREE PLACE DECIMAL ±		COMMENTS:		
INTERPRET GEOMETRIC TOLERANCING PER:				SCALE: 10:1 WEIGHT: SHEET 1 OF 1
MATERIAL				
NEXT ASSY	USED ON	FINISH		
APPLICATION		DO NOT SCALE DRAWING		