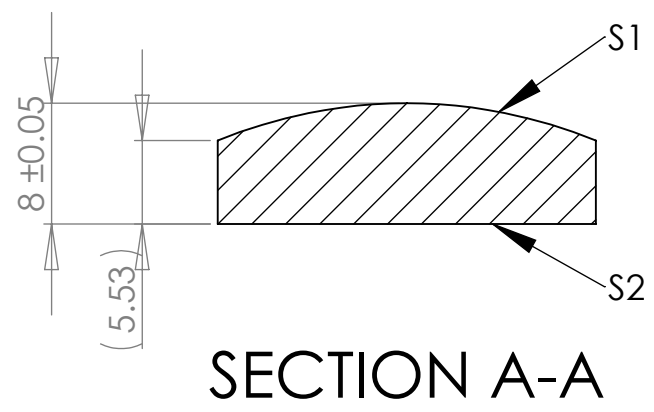
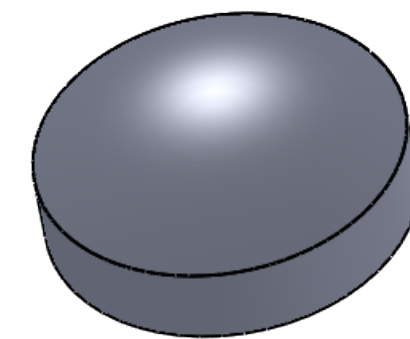
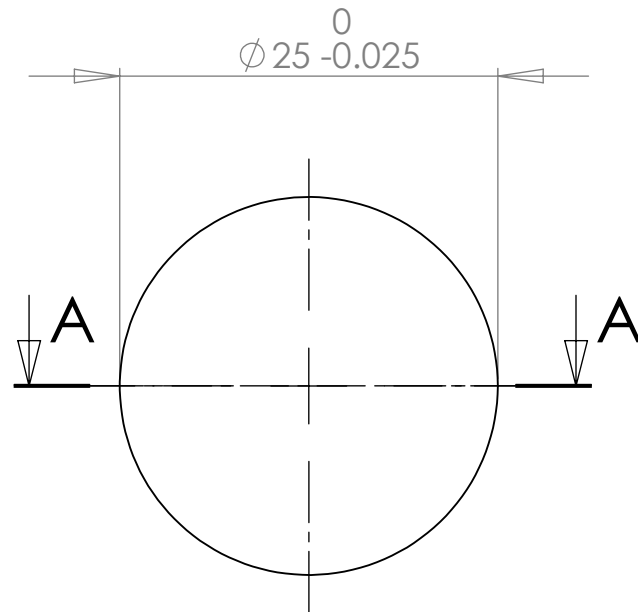


REVISIONS			
REV.	DESCRIPTION	DATE	APPROVED
A	Initial release	2/21/2013	DAT



S1 Aspheric Surface:
 Radius: 32.206mm (4 fringes Power)
 Irregularity: <0.4 micron PV
 Surface Quality: 40/20

S2 Plano Surface:
 Radius: plano
 Flatness: lambda/4 (<1 fringe power)
 Surface Quality: 40/20

EFL @546nm = 70.0mm

- Notes:
- 1) Material: UV Grade Fused Silica
 - 2) Clear Aperture: 22.5mm
 - 3) Centration/Wedge: 3 arcmin
 - 4) Custom Coating per Customer Request
 - 5) Bevel Edges: 0.1-0.3mm max face width at 45°
 - 6) All dimensions in mm unless noted

1208 Sigma CT.
 Rockwall, TX 75087
 Ph: (972) 722-1064
 Web: www.archeroptx.com



PROPRIETARY AND CONFIDENTIAL
 THE INFORMATION CONTAINED IN THIS DRAWING IS THE SOLE PROPERTY OF ARCHER OPTX, INC. ANY REPRODUCTION IN PART OR AS A WHOLE WITHOUT THE WRITTEN PERMISSION OF ARCHER OPTX, INC. IS PROHIBITED.

UNLESS OTHERWISE SPECIFIED:		NAME	DATE	TITLE: GACP-25-70
DIMENSIONS ARE IN MM TOLERANCES: FRACTIONAL ± ANGULAR: MACH ± BEND ± TWO PLACE DECIMAL ± THREE PLACE DECIMAL ±		DRAWN		
INTERPRET GEOMETRIC TOLERANCING PER:		CHECKED		
MATERIAL		ENG APPR.		
FINISH		MFG APPR.		
NEXT ASSY	USED ON	Q.A.		SIZE DWG. NO. REV B 022113-4 A
APPLICATION		COMMENTS:		SCALE: 2:1 WEIGHT: SHEET 1 OF 1
DO NOT SCALE DRAWING				