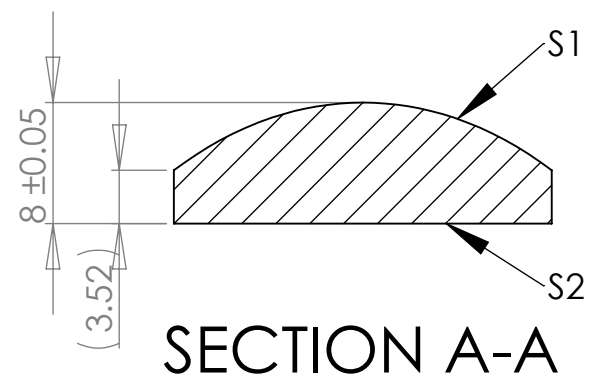
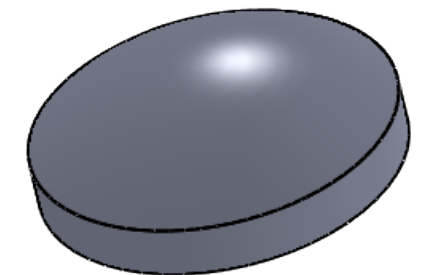
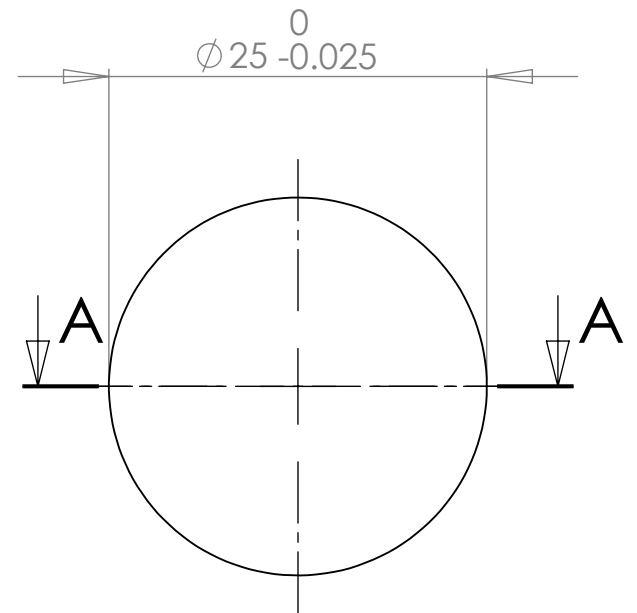


REVISIONS			
REV.	DESCRIPTION	DATE	APPROVED
A	Initial Release	2/21/2013	DAT



**S1 Aspheric Surface:**  
 Radius: 18.403mm (4 fringes power)  
 Irregularity: <0.4 micron PV  
 Surface Quality: 40/20

**S2 Plano Surface:**  
 Radius: plano  
 Flatness: Lambda/4 (<1 fringe power)  
 Surface Quality: 40/20

EFL @546nm = 40.0mm

- Notes:
- 1) Material: UV Grade Fused Silica
  - 2) Clear Aperture: 22.5mm
  - 3) Centration/Wedge: <3 arcmin
  - 4) Custom Coating per Customer Request
  - 5) Bevel Edges: 0.1-0.3mm max face width at 45°
  - 6) All dimensions in mm unless noted

1208 Sigma CT.  
 Rockwall, TX 75087  
 Ph: (972) 722-1064  
 Web: www.archeroptx.com



**PROPRIETARY AND CONFIDENTIAL**  
 THE INFORMATION CONTAINED IN THIS DRAWING IS THE SOLE PROPERTY OF ARCHER OPTX, INC. ANY REPRODUCTION IN PART OR AS A WHOLE WITHOUT THE WRITTEN PERMISSION OF ARCHER OPTX, INC. IS PROHIBITED.

UNLESS OTHERWISE SPECIFIED:		NAME	DATE	TITLE: <b>GACP-25-40</b>
DIMENSIONS ARE IN MM		DRAWN		
TOLERANCES:		CHECKED		
FRACTIONAL ±		ENG APPR.		
ANGULAR: MACH ± BEND ±		MFG APPR.		
TWO PLACE DECIMAL ±		Q.A.		SIZE DWG. NO. REV <b>B GACP-25-40 A</b>
THREE PLACE DECIMAL ±		COMMENTS:		
INTERPRET GEOMETRIC TOLERANCING PER:				SCALE: 2:1 WEIGHT: SHEET 1 OF 1
MATERIAL				
NEXT ASSY	USED ON	FINISH		
APPLICATION		DO NOT SCALE DRAWING		