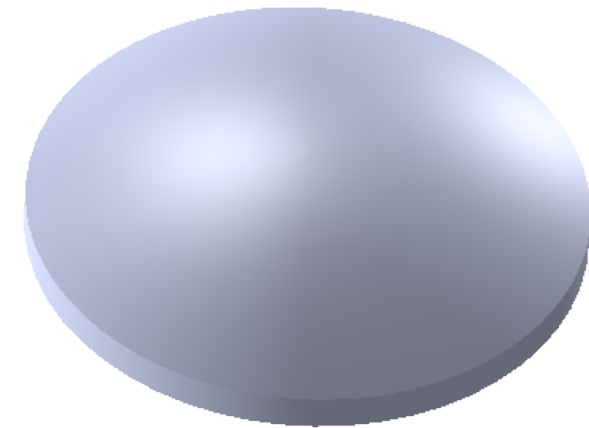


REVISIONS			
REV.	DESCRIPTION	DATE	BY
A	Initial	9/19/2019	DF
B	Update	9/25/2019	DF



SECTION A-A

S1 Aspheric Surface
 Radius: 95.210mm (4 fringes power)
 Irregularity: $0.5 \mu\text{m}$ PV
 Surface Quality: 40-20 S-D

S2 Plano Surface
 Radius: Plano
 Flatness: $\lambda/4$ (1 fringe power)
 Surface Quality: 40-20 S-D

EFL = 125mm @ 546nm

Notes
 Material: SF4
 Centration: 3 arcmin
 Custom Coating per Customer Request
 Clear Aperture: 45mm
 Break all Sharp Edges

1208 Sigma CT.
 Rockwall, TX 75087
 Ph: (972) 722-1064
 Web: www.archeroptx.com

Archer Optx
 Optical Precision. Optimal Outcome.

PROPRIETARY AND CONFIDENTIAL
 THE INFORMATION CONTAINED IN THIS DRAWING IS THE SOLE PROPERTY OF ARCHER OPTX, INC. ANY REPRODUCTION IN PART OR AS A WHOLE WITHOUT THE WRITTEN PERMISSION OF ARCHER OPTX, INC. IS PROHIBITED.

UNLESS OTHERWISE SPECIFIED:		NAME	DATE	TITLE: Ashere-Plano Lens
DIMENSIONS ARE IN MM		DRAWN		
TOLERANCES:		CHECKED		
FRACTIONAL \pm		ENG APPR.		
ANGULAR: MACH \pm BEND \pm		MFG APPR.		
TWO PLACE DECIMAL \pm		Q.A.		SIZE DWG. NO. REV B GACP-100-125S B
THREE PLACE DECIMAL \pm		COMMENTS:		
INTERPRET GEOMETRIC TOLERANCING PER:				SCALE: 0.75 WEIGHT: SHEET 1 OF 1
MATERIAL				
NEXT ASSY	USED ON			
APPLICATION		DO NOT SCALE DRAWING		