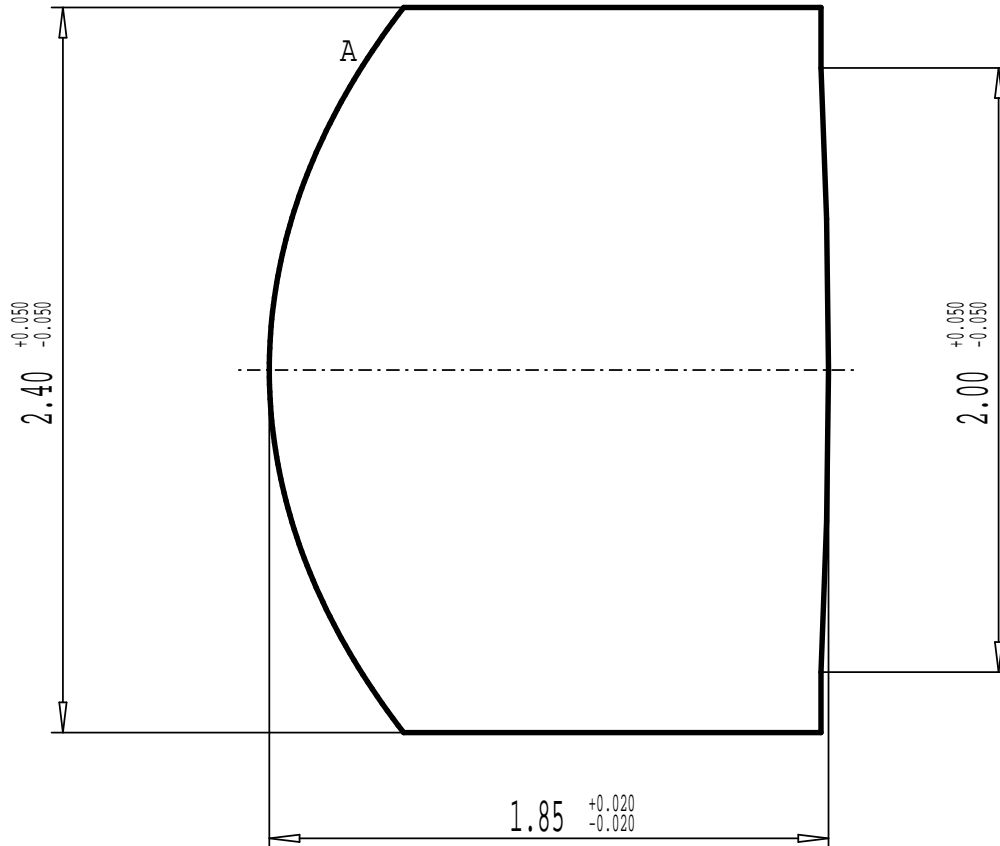


ALL DIMENSIONS IN MM



Left Surface		Material	Right Surface	
R	1.70000 CX	ARCHER: S-LAH60M	R	19.97121 CX
Dia_e	2.200	n_d 1.82894 +/-0.0005	Dia_e	1.500
Chamfer	0.10	V_d 36.99 +/- 0.80%	Chamfer	0.10 - 0.30
Coating	BBAR	0/ 10.00	Coating	BBAR
3/	3.0(0.3/-)	1/ 3 x 0.16	3/	3.0(0.5/-)
4/	4.50 arcmin	2/ 3 ; 2	4/	0.00 arcmin
5/	MIL 60-40; C -		5/	MIL 60-40; C -
	L -; E -			L -; E -

Scale <b>40.0:1</b>	Remarks:	Part <b>L150</b>
Ind. according to ISO 10110	Drawn by:	PartNo
	Approved:	Revision <b>G</b>
	Date: <b>04 Jun. 2007</b>	